

# Installation Guide for GTS NX License



## Step 1

- launch the setup.exe file in the installation folder and follow the instructions
- At the end of the procedure, When a prompt asks the Type of license, choose “Web license”.

## Step 2

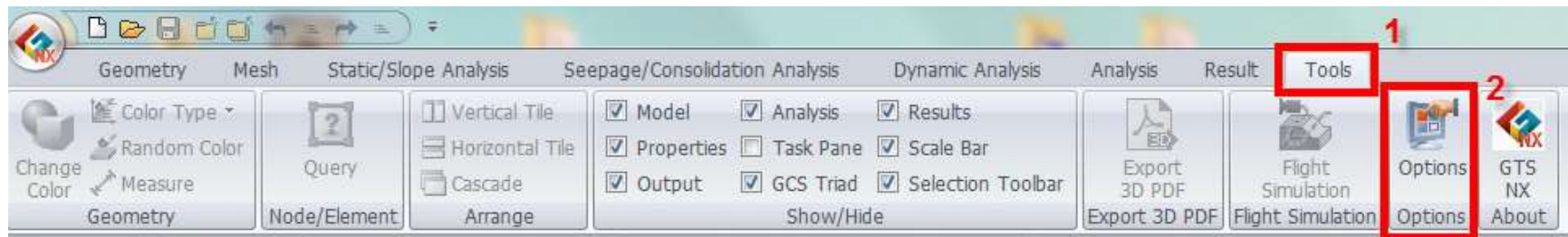
- Go on midas Website  
en.midasuser.com to create a MUSS  
account ID and password.
- Direct Link:  
[http://www.midasuser.com/membership/agreement\\_en.asp](http://www.midasuser.com/membership/agreement_en.asp)

The screenshot displays the MUSS Membership website interface. The header includes the MUSS Membership logo and a language selection dropdown set to English. The main content area is titled "Terms of Use" and "Midas User Support System". It contains several sections:

- A "Membership" sidebar with links for "Find ID/Password" and "Need help signing in?".
- A "Terms of Use" section with a warning: "Please read the agreement between User and MidasUser.com before completing profile information." and a link to the "PRIVACY POLICY".
- An "Inquire about Membership" section with a scrollable text area containing the following text:  
**AGREEMENT BETWEEN USER AND www.MidasUser.com**  
The www.MidasUser.com Web Site is offered to you conditioned on your acceptance without modification of the terms and conditions contained herein. Your use of the www.MidasUser.com Web Site constitutes your agreement to all such terms and conditions.  
**MEMBER REGISTRATION, PASSWORD AND SECURITY**  
You must complete the registration process by providing us with current, complete and accurate information as prompted by the applicable registration form. You then will choose a user ID and a password. You are entirely responsible for maintaining the confidentiality of your ID, password and account. Furthermore, you are entirely responsible for any and all activities that occur under your account. You agree to notify www.MidasUser.com immediately of any unauthorized use of your account or any other breach of security.
- "Agree" and "Cancel" buttons at the bottom.

### Step 3

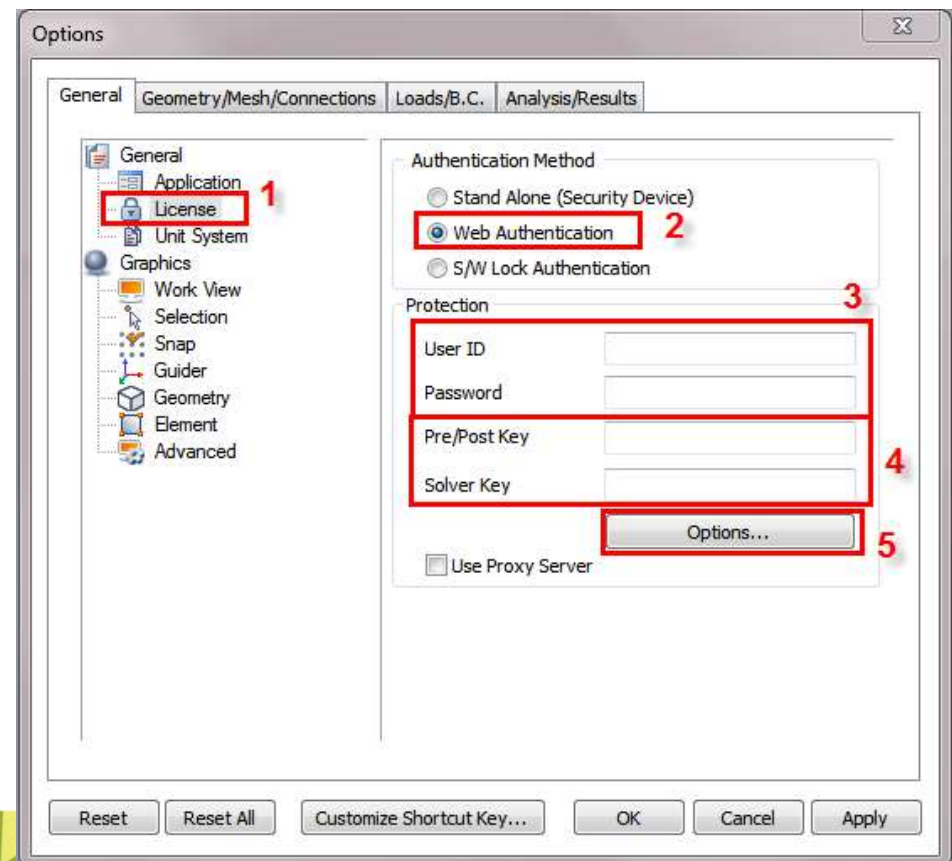
- Open the software GTS NX
- Open the Menu Tools > Options



### Step 4

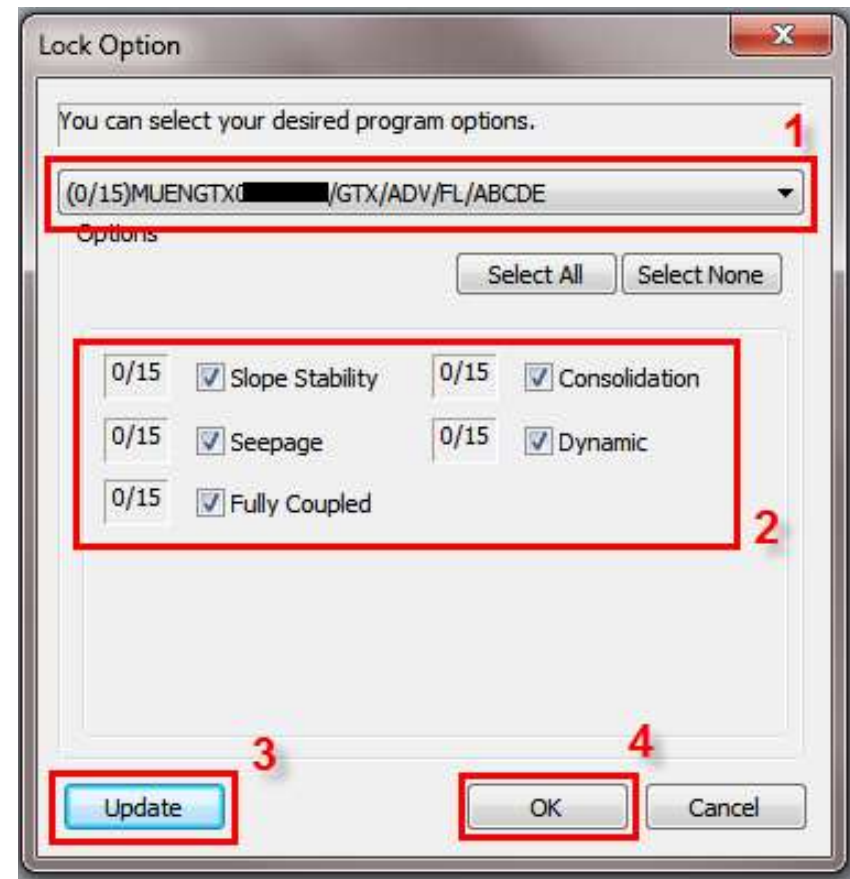
- 1- Open the Menu General > License
- 2- Select “Web Authentication”
- 3- Enter you MUSS ID/Password
- 4- Enter the license PKID into the fields “Pre/Post Key” and “Solver Key”
- 5- Click on Options

**Important:** For the web license, the Pre/Post key and the Solver Key are identical, so please copy the same PKID in the 2 fields.



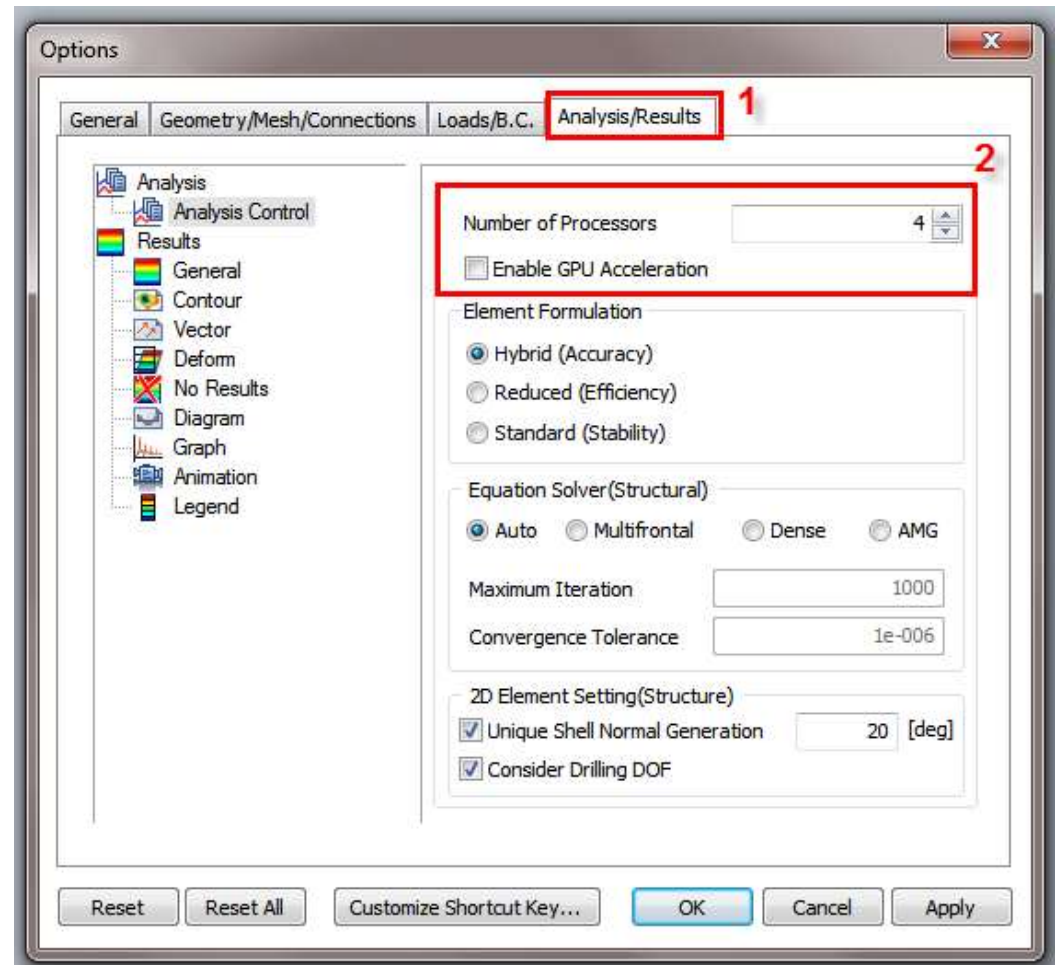
## Step 5

- 1- Select the right Product ID corresponding to your web license
- 2- Verify that the Options you have are activated
- 3- Click on Update Button
- 4- Click on OK



## Step 6

- 1- Open the Menu Options > Analysis/Results
- 2- Select the right number of processors corresponding to your PC
- 3- You can choose to enable also the GPU Calculation if your graphic card has more than 0.5 Teraflops in double precision\*



\* Card of Type Nvidia Tesla or better is recommended for significant calculation speed improvement (around 5~20 times faster calculation depending on the model.)